

September 2017

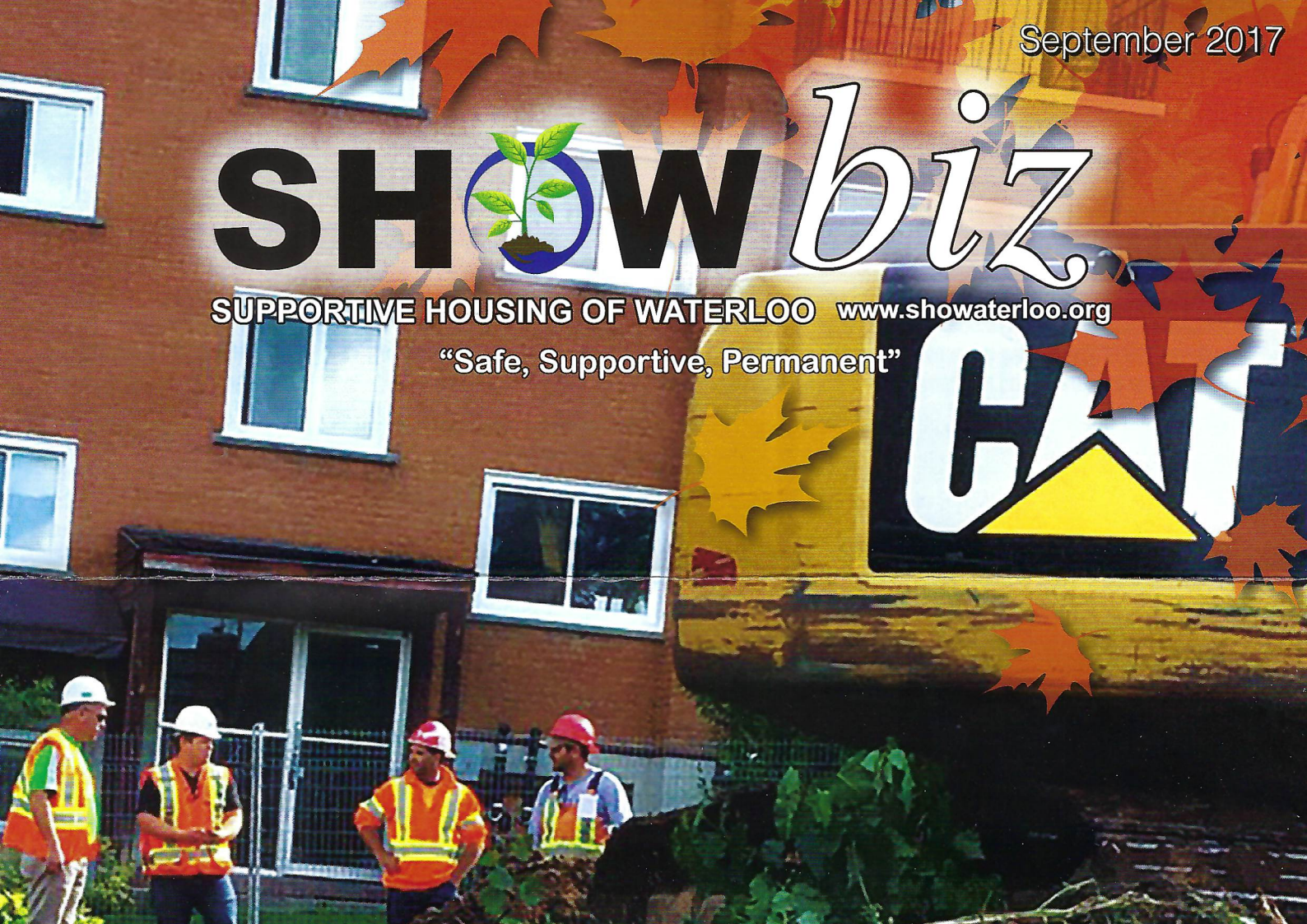
SHOWbiz

SUPPORTIVE HOUSING OF WATERLOO www.showaterloo.org

"Safe, Supportive, Permanent"



CAT



**PLEASE HELP US BUILD 402 ERB ST. WEST
BY PURCHASING BRICKS FOR \$5 EACH.**

**20,000 Bricks will create a
new home for 9 people who
desperately need affordable
housing**



362 Erb St. West, Office 5 Waterloo, Ontario N2L 1W6 • 519-886-8200

BEYOND BORDERS

Beyond Borders is a remarkable program facilitated by St. Jerome's University under the direction of Bess Mitchell. Some students within the Beyond Borders program choose to spend a term in a far off country, working with local non-profits, while others choose to invest their time and commitment to more local placements. I feel SHOW has been profoundly blessed through this wonderful partnership, and the letters below were written by two of our placement students, whose roles had them working directly with me as support "staff". Not a day goes by when I don't send a silent thank you to this amazing program, their staff and in particular to those students who worked so closely with SHOW and have made such a great impact on our work.

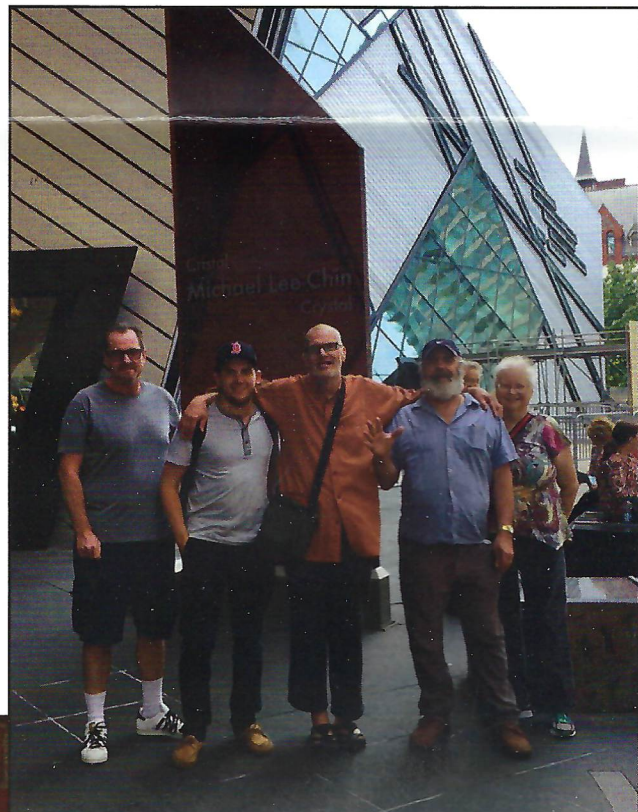
SHOW hosts many students annually, it is a place where students can begin to learn about systemic poverty, housing instability, mental health, addictions, building community and more. Thank you to all of you for making SHOW your placement.

"A volunteering placement with Supportive Housing of Waterloo was a tremendous opportunity to learn more about the need to house those who have experienced chronic homelessness due to mental health and addictions in Waterloo Region. As an Urban Planning Co-op student at University of Waterloo I believe it is important to diversify my co-op placements. By experiencing different areas of city planning (social, political, economical, etc.) I am better able to understand how a city functions, and overall become a well-rounded Planner for the future. Not-for-profits are a key player in the development of a healthy city. It is easy to read about these organizations that serve groups of marginalized people. But experiential learning is an indispensable opportunity to further understand another person's life. I can attest that SHOW has truly created a community that has helped those recover from addictions and improve their mental health. Building rapport by interacting with the tenants everyday allowed me to further understand homelessness. It wasn't until after my placement that I realized how much those conversations and interactions pushed me to be more confident and independent when around this group of marginalized individuals."

Kate

"It is impossible to adequately express the extent of all that I have learned through my short placement at SHOW. Through every day that I have spent at Supportive Housing of Waterloo, and every interaction with both tenants and staff, the importance of the work that SHOW is doing has become increasingly apparent. SHOW is truly satisfying a significant need within our society; moving beyond simply recognizing the fundamental right to housing that all possess, and striving to create a world in which this right can be realized and attained by all. However, what strikes me as most remarkable is SHOW's focus on the process of achieving this goal, in addition to the end product. SHOW's identification of and attention towards its guiding principles of respect and inclusivity, and its assertion towards upholding the dignity of all those it works with, are what set SHOW apart and make it a phenomenal work environment. It has been invigorating to observe how SHOW is applying concepts I have discussed in the classroom to enhance the access to resources and opportunities of the most marginalized members of society and overall transform society for the better. As a student in the School of Planning at the University of Waterloo, I am grateful to have had the opportunity to learn about and understand the integral roles that SHOW, and other non-profit agencies, play within the complex dynamics of society, and how these agencies are essential to the achievement of the social aims of city planning."

Tyler



THE HOARDING PROJECT

The Hoarding Project has been a truly remarkable initiative in the Region since its' inception in July of 2013. The work done prevented close to 300 people from evictions, with agreements negotiated with landlords, supports put in place and housing instability addressed and resolved. For hundreds of other folks, mental health challenges were finally diagnosed, in some cases elder abuse was stopped or prevented, health care made accessible to some who were virtually imprisoned by their "stuff", homes were made livable again, lives repaired. Try as we might, funding in it's current form for this vital initiative has been elusive. In partnership with the University of Waterloo the project will be embarking on research into those who hoard animals, funded by the federal government, and the first research of its' kind in North America. The need in our community is enormous and our response to the need is to continue The Hoarding Project as a training program for front line workers, first responders, social services and health care professionals so that we may build capacity throughout the community to better respond to issues of hoarding. Kim Hodder, the project coordinator has shaped this work into a model for us all to follow, her kindness, tremendous skills and huge contribution to SHOW will be deeply missed as she embraces a new role in the community.

When I think back on my first days at SHOW I remember the culture. I had a professor in school who always said "you will know how an organization is run by the feeling you get when you enter the front door – the culture".



Those initial days were unique. It took time to peel away all the layers of the individuals who live at SHOW, as well as my new and growing caseload of individuals in the community. However, in time it became evident; we were and are a family. Our ED is 'mama' to some tenants, the doors to our offices are the doors to home – where the key is always under the mat, and you can let yourself in anytime.

The impact that this organization has made on my life over the last few years of managing the hoarding project has been monumental. It came with many challenges, lots of ups and downs and so many learning curves. It also came with growth, innovation and most importantly community. This is the type of organization I feel blessed to have been welcome by.

When I think of my career, my job and the work that I do, I see that as an extension of myself. I firmly believe that if you can work within a team that is grounded, connected and truly supportive

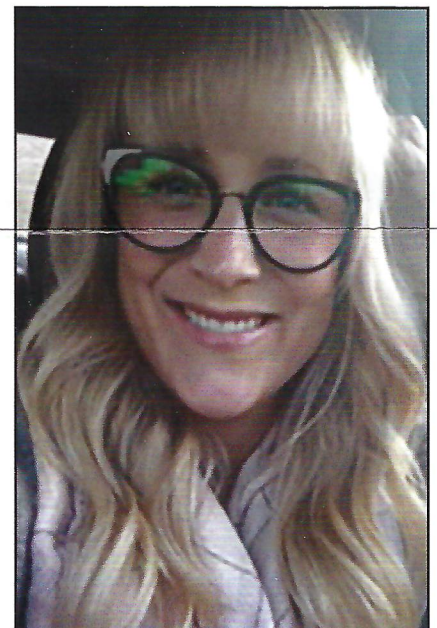
you can move mountains. Which I know is exactly what we did and continue to do.

With the help of so many and the unconditional support of my team members, committee members, the Board and a truly incredible Executive Director we were able to take this role and run. We supported hundreds of individuals who struggled with hoarding tendencies, had the opportunity to educate the public and supports on hoarding and we built ongoing relationships with many community partners. Most importantly we built capacity and understanding where there was little before.

So as I write these words, it is with every single part of my heart when I say that I will miss this organization immensely. I think the great part about building a work family is that when you leave home you can always return to visit, welcomed by the same key under the mat. That thought alone gives me so much joy as I embark on this new journey.

Thank you for such a wonderful ride.

Kim Hodder



Supportive Housing of Waterloo

362 Erb St. West,
Waterloo, N2L1W6

519-886-8200

Supportive Housing of Waterloo (SHOW) is a non profit organization whose mandate is to provide safe, supportive and permanent housing to those who have experienced persistent homelessness or barriers to affordable housing.

ABERDEEN HOMES LTD. LOOKING FORWARD TO WORKING WITH SHOW

As a homebuilder we are very focused on developing projects appealing to the homebuying public in Waterloo Region and beyond. We need to build and sell our projects within a timeframe that allows us to continue our business cycle (buy land, develop land, build homes and sell to purchaser) and be profitable. Without keeping our eye on current market conditions, we may miss opportunities to continue to grow our business. Like most businesses we need to be price conscience and offer our purchasers value for the money we hope they will spend on our homes.

The principles at Aberdeen Homes have, over the years built, owned and managed affordable rental accommodations, and volunteered time and donated funds to local non-profit organizations providing housing for people who cannot afford market rate homes. Continuing with this tradition, we are very excited to be working with SHOW to construct 9 accessible apartment units at 402 Erb St. in Waterloo.

Providing housing that is within reach of those most in need in our Region is very important to our society as a whole. Working with SHOW to build homes for people who normally would not have a place to call there own is a very satisfying and humbling experience. Through this process we have been focused on who the building is for and what it will mean for its future occupants. While we are proud of the contributions we have made to the Region's housing stock, we as an industry, need to focus on providing housing for more than just those that can afford to purchase a home.

BUILDING SUPPORTED HOUSING, BRICK BY BRICK

The process of creating more housing for those marginalized by poverty in our community has been challenging but we continue to keep focused on the goal of providing more affordable housing for those in need.

It has been easy to become completely immersed in the world of permits, financing, fundraising, and the minutiae of "the build" but I often return to the reason why this new building is so important. SHOW builds community. We have successfully demonstrated our ability to integrate some of the hardest to house in all of this Region, into the larger community. We support people, many of whom may not have had a roof over their heads in over 20 years, to navigate a kitchen, to learn how to use appliances, to clean and cook and master skills that most of us have learned in our youth. Even more, we help reduce the loneliness and isolation faced by many who have to learn how to live on their own. Giving someone housing is the first step; helping them make it a home is just as important and is a significant factor in increasing housing stability. For SHOW it is much like parenting, a 24/7 job with our adults tenants. We are delighted that some of our current tenants have achieved a level of stability and housing success that they no longer need the high level of support offered at 362 Erb West. Their success is the reason why we are building an affordable housing apartment at 402 Erb West. It also means that we will be able to free up some of our current supported units at 362 Erb West and provide these units to those desperately in need of supports to negotiate day to day living. For SHOW more affordable housing means more supported housing!

We are energized by our new affordable housing project at 402 Erb West and invite you to support our Campaign - "Building Supported Housing, Brick by Brick". We need 20,000 bricks to complete our new apartment building. Each brick is \$5.00 and 20,000 bricks are needed to construct 402 Erb West.

Invite your family and friends to join you in purchasing 'bricks' and help us to realize a vision for our future tenants where they can be the heart of their community and experience success in a place of their own.

www.showwaterloo.org